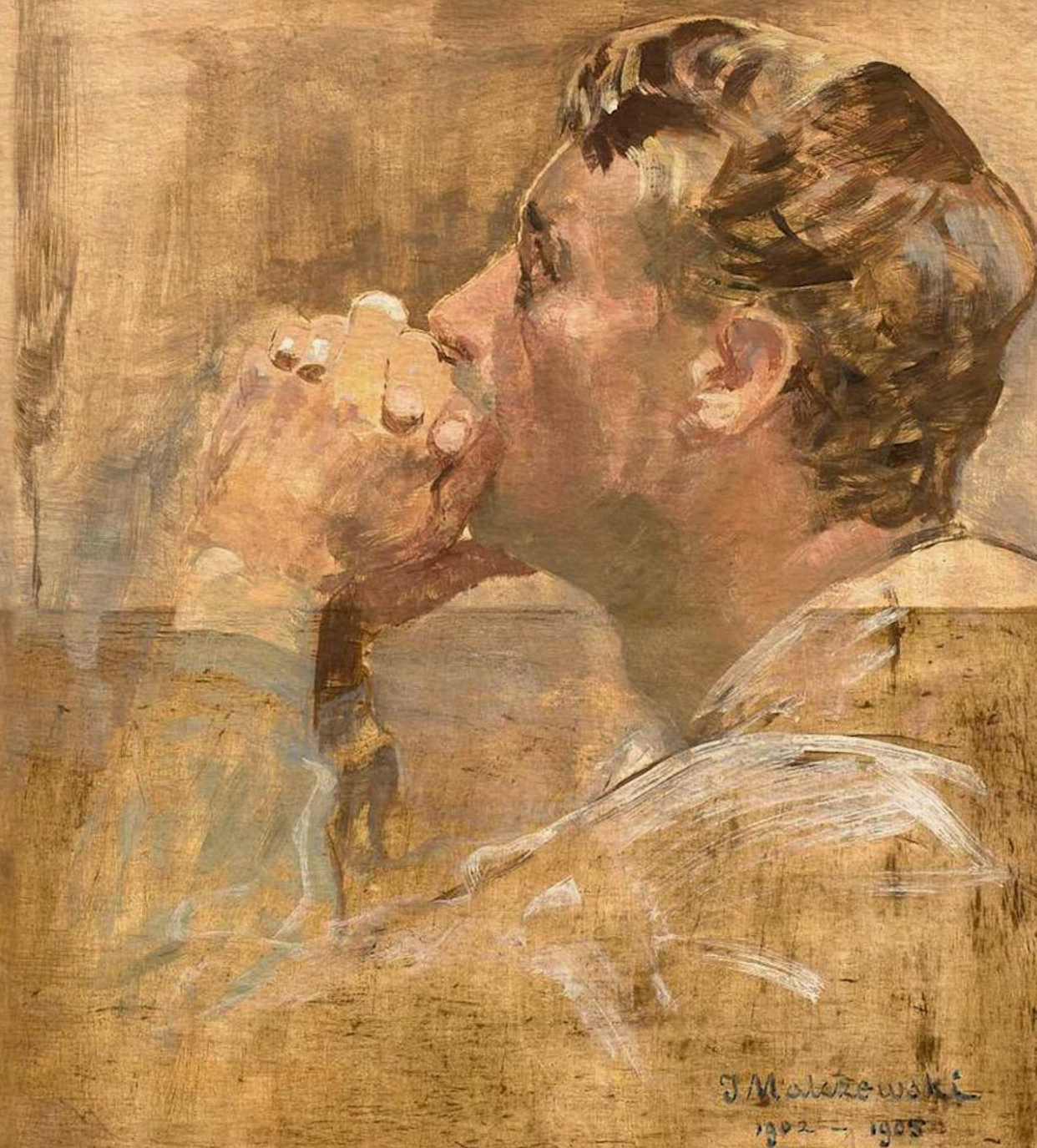


When We
Pray



J. Malczewski
1902 - 1905



EASTER SUNDAY

THE RESURRECTION IS MEANT FOR THE CITY

April 20, 10:30AM • Dunbar High School

Identical preservice at 8:15am for all Easter volunteers and their families and those with mobility issues or sensory challenges.





Challenging

Challenges grow us

Responding to challenges
correctly is an opportunity
to grow spiritually.

What challenge are you facing right now, and how are you responding to it?

When they came to the crowd, a man approached Jesus and knelt before him. "Lord, have mercy on my son," he said. "He has seizures and is suffering greatly. He often falls into the fire or into the water. I brought him to your disciples, **but they could not heal him...**"

Jesus rebuked the demon, and it came out of the boy, and he was healed at that moment.

Then the disciples came to Jesus in private and asked, "Why couldn't we drive it out?"

Matthew 17: 14-16,19

Today:

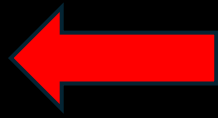
How to respond to life's
challenges in a way that
develops greater intimacy
with God

Why is this so important?

10

5

1



10

7



1

Jesus sees in you what is,
and also what could be.

“God develops a person over a lifetime... He uses people and circumstances to shape our needed growth...”

Plateau is often indicative of
needed **inner life growth**
within the follower of Jesus.”

-Terry Walling

After Jesus had gone indoors, his disciples asked him privately, “Why couldn’t we drive it out?”

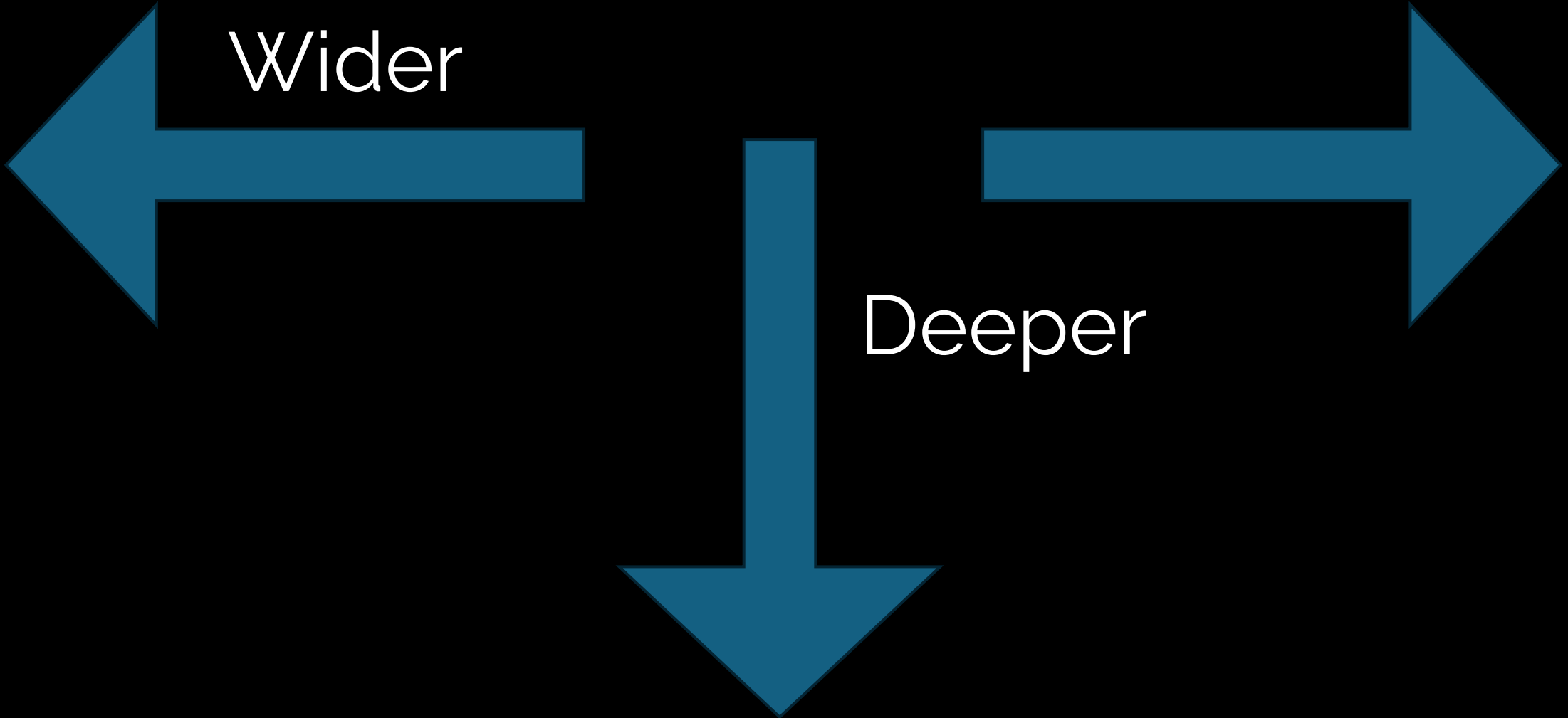
He replied, “This kind can come out only by **prayer and fasting.**”

Mark 9:28-29

Challenges will come to
grow our intimacy with
the Father.



Deeper



Wider

Deeper

Paths to intimacy with the
Father:

Paths to intimacy with the Father:

Time

Paths to intimacy with the Father:

Time

Obedience

Paths to intimacy with the Father:

Time

Obedience

Confession

Paths to intimacy with the Father:

Time

Obedience

Confession

Emptying

We can't face today's
challenges with
yesterday's experience.

FAC, let's meet our space
challenges with intimacy
with God before strategy.

He replied, "Because you have so **little faith**. Truly I tell you, if you have faith as small as a mustard seed, you can say to this mountain, 'Move from here to there,' and it will move. Nothing will be impossible for you."

Matthew 17: 20-21

Faith must look to
something in trust.

Challenges will come to
teach us how to keep our
eyes on Jesus in the chaos.



But when he **saw the wind**, he was afraid and, beginning to sink, cried out, “Lord, save me!”

Matthew 14:30



Jesus is never nervous.

Jesus asked., “Who do people say the Son of Man is?”..

“ But what about you?” he asked. “Who do you say I am?”

Simon Peter answered, “You are the Messiah, the Son of the living God.”

And I tell you that you are Peter, and on this rock I will build my church, and the gates of Hell will not overcome it. I will give you the keys of the kingdom of heaven; ” ...

Matthew 16

I will give you the **keys** of the kingdom of heaven...

I will give you the keys of the kingdom of heaven...

Challenges will come to teach us how to wait on God and receive “Keys” to open that which is shut.



What challenge are you facing right now, and how are you responding to it?



Could it be that in being stretched you are finding and fulfilling your purpose?

Responding to challenges
correctly is an opportunity
to grow spiritually.

What challenge are you facing right now, and how are you responding to it?