



**A  
STAINED  
BEAUTY**

A large, multi-paned stained glass window with a dark, muted color palette of blues, greens, and browns. The window depicts various religious scenes, including figures in prayer, a central figure in a red robe, and a figure with a halo. The text is overlaid on the central part of the window.

**The Church is  
God's idea.**

A large, multi-paned stained glass window with a dark, muted color palette of blues, greens, and browns. The window depicts various religious scenes, including figures in prayer, a central figure in a golden robe, and a group of people in a building. The text is overlaid on this background.

# The Church at Colossae

Colossians Ch. 1

JESUS  
SO MUCH POWER IN THE NAME OF JESUS

JESUS  everything

LIFE 2022 | July 5-9 | Orlando, FL



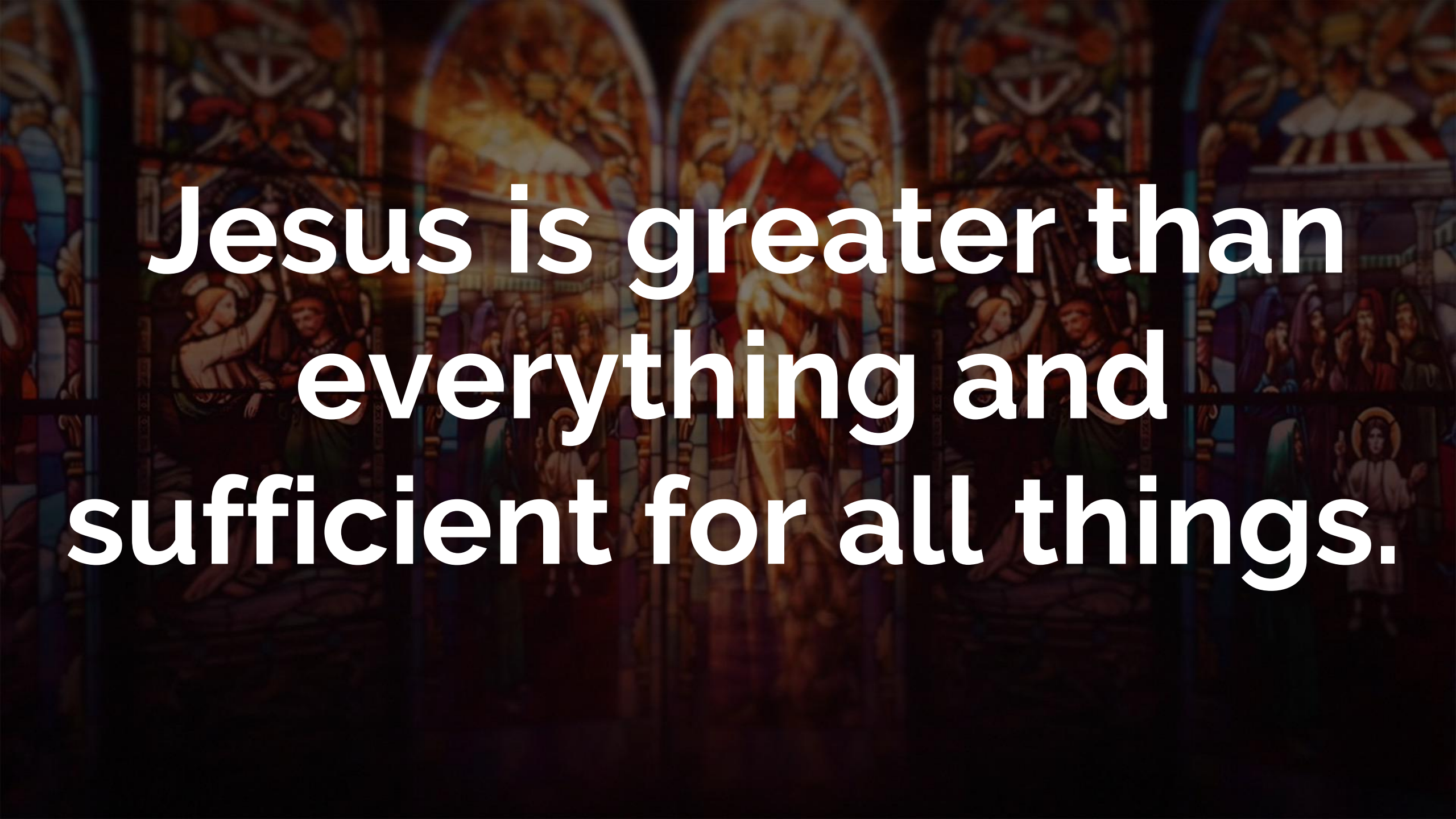
# JESUS

IS GREATER THAN  
*everything*

LIFE CONFERENCE 2022 – July 5-9

The background is a dark, semi-transparent image of a stained glass window. It features a central panel with a figure of Jesus, possibly in a crucifixion or a similar scene, surrounded by other panels depicting various religious figures and scenes. The overall color palette is dominated by dark blues, browns, and reds, with some lighter areas where the glass is more visible.

**The theme of the  
book of Colossians is  
Jesus is greater than  
everything...**

A large, ornate stained glass window with multiple arched panels. The central panel features a prominent figure, likely Jesus, surrounded by other figures in a dramatic scene. The colors are rich and varied, including reds, blues, and golds. The overall scene is dimly lit, with the text overlaid in bright white.

**Jesus is greater than  
everything and  
sufficient for all things.**

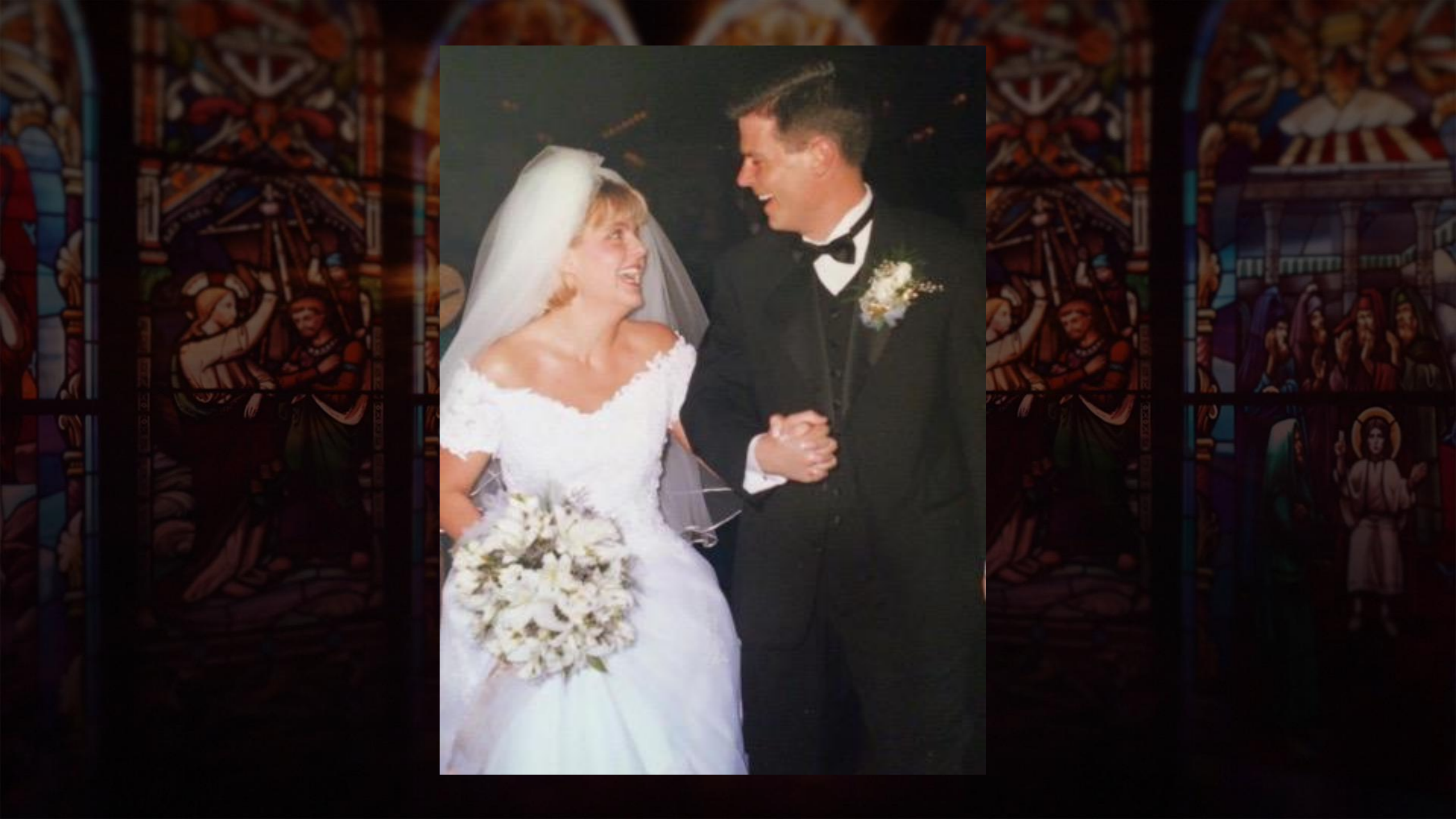
# He is sufficient for:

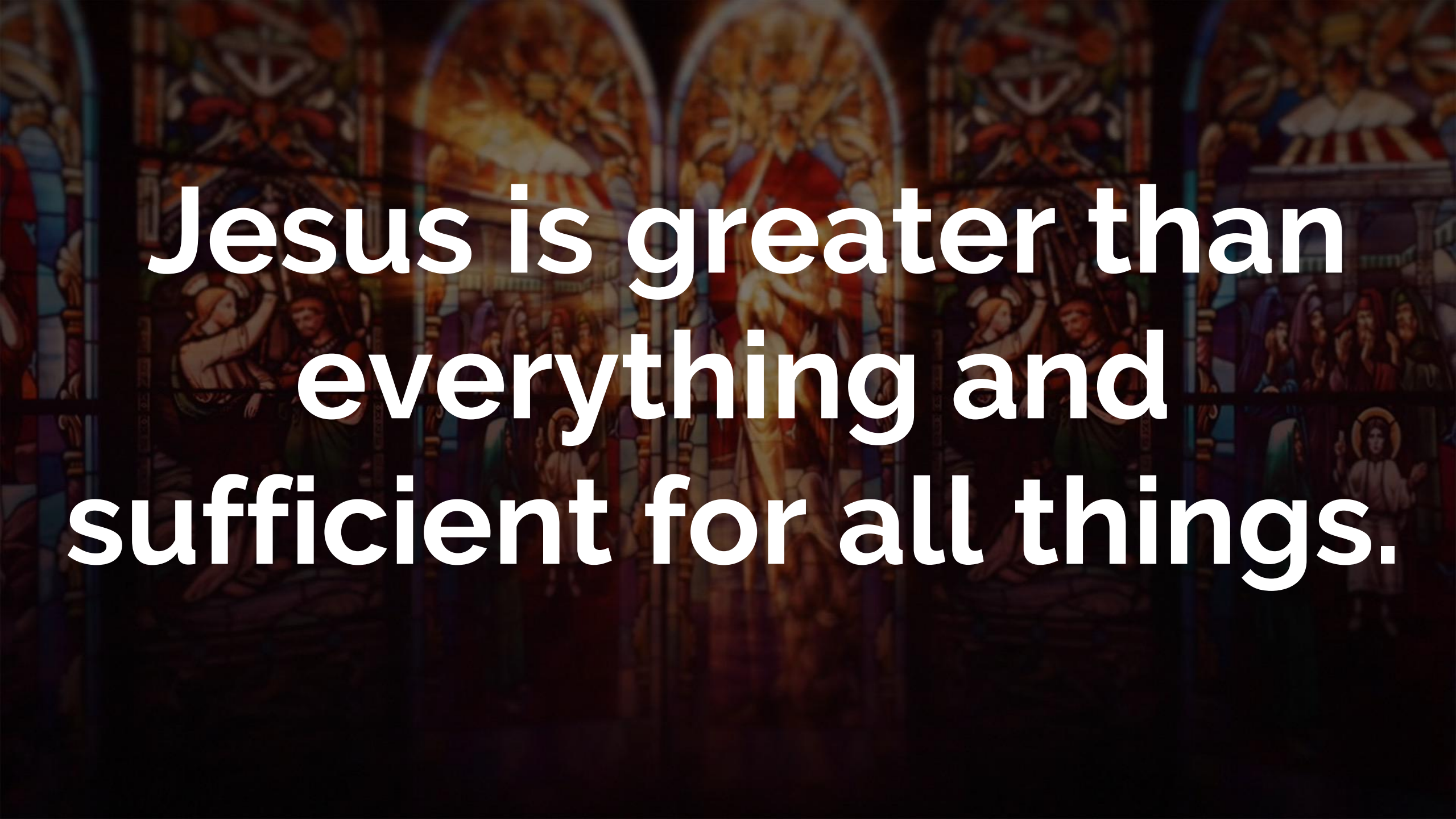
Every challenge you have

Every temptation you face

Every struggle you are in

When the loneliness will not lift.



The background is a dark, semi-transparent overlay of a colorful stained glass window. The window features several panels with religious imagery, including a central panel depicting the crucifixion of Jesus, and other panels showing figures in prayerful or dramatic poses. The colors are rich and varied, including reds, blues, yellows, and greens.

**Jesus is greater than  
everything and  
sufficient for all things.**



Turkey

Syria

Jordan

Afyonkarahisar

Kayseri

Konya

Kahramanmaraş

Gaziantep

Diyarbakır

Batman

Mardin

Iğdır

Van

Ardabil

Rasht

Zanjan

Izmir

Denizli

Bodrum

Antalya

Alanya

Mersin

Cyprus

Limassol

Lebanon

Beirut

Damascus

Haifa

WEST BANK

Jerusalem

Israel

Cairo

6th of October City

Aqaba

Sakaka

Iraq

Baghdad

Karbala

Hillah

Najaf

Khorramabad

Kermanshah

Kirkuk

Sulaymaniyah

Sanandaj

Mosul

Erbil

Qa

بن

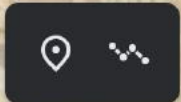
3D



- +

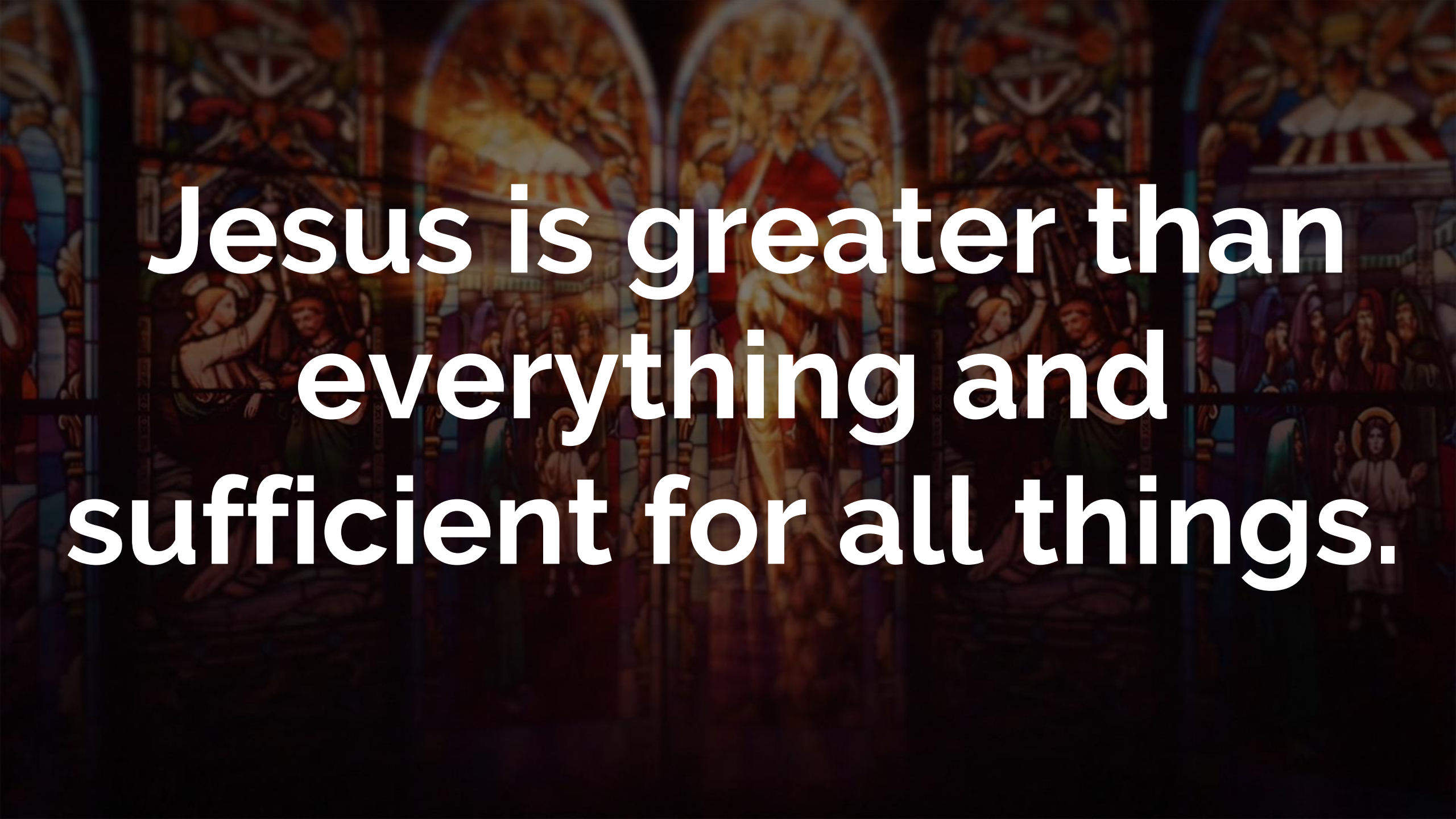


Ku



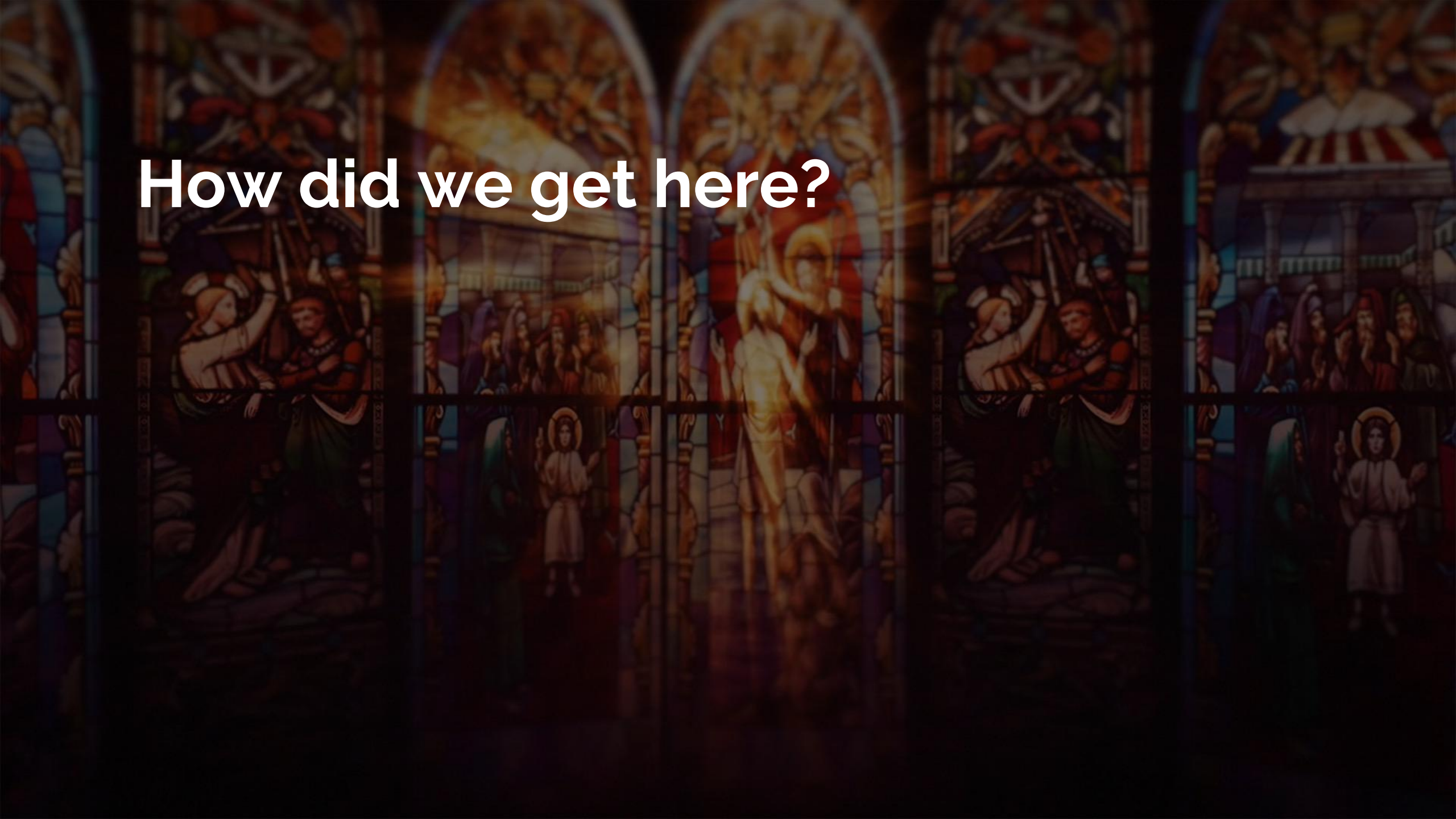


C.S. Lewis

A large, ornate stained glass window with multiple arched panels. The central panel features a prominent figure, likely Jesus, surrounded by other figures. The colors are rich and varied, including reds, blues, and golds. The overall scene is a religious or historical narrative.

**Jesus is greater than  
everything and  
sufficient for all things.**

How did we get here?





**How did we get here?**

**Why are we here?**



**How did we get here?**

**Why are we here?**

**Who determines right and wrong?**



**How did we get here?**

**Why are we here?**

**Who determines right and wrong?**

**What happens after you die?**

The background features a row of five stained glass windows. From left to right: the first window shows the Last Supper with Jesus and his disciples; the second window depicts the Resurrection with an angel and the empty tomb; the third window shows the Ascension with Jesus rising into the air; the fourth window illustrates the Pentecost with the Holy Spirit as a dove and tongues of fire; the fifth window shows the Ascension again, with Jesus rising into the air. The text "How did we get here?" is overlaid in white on the central windows.

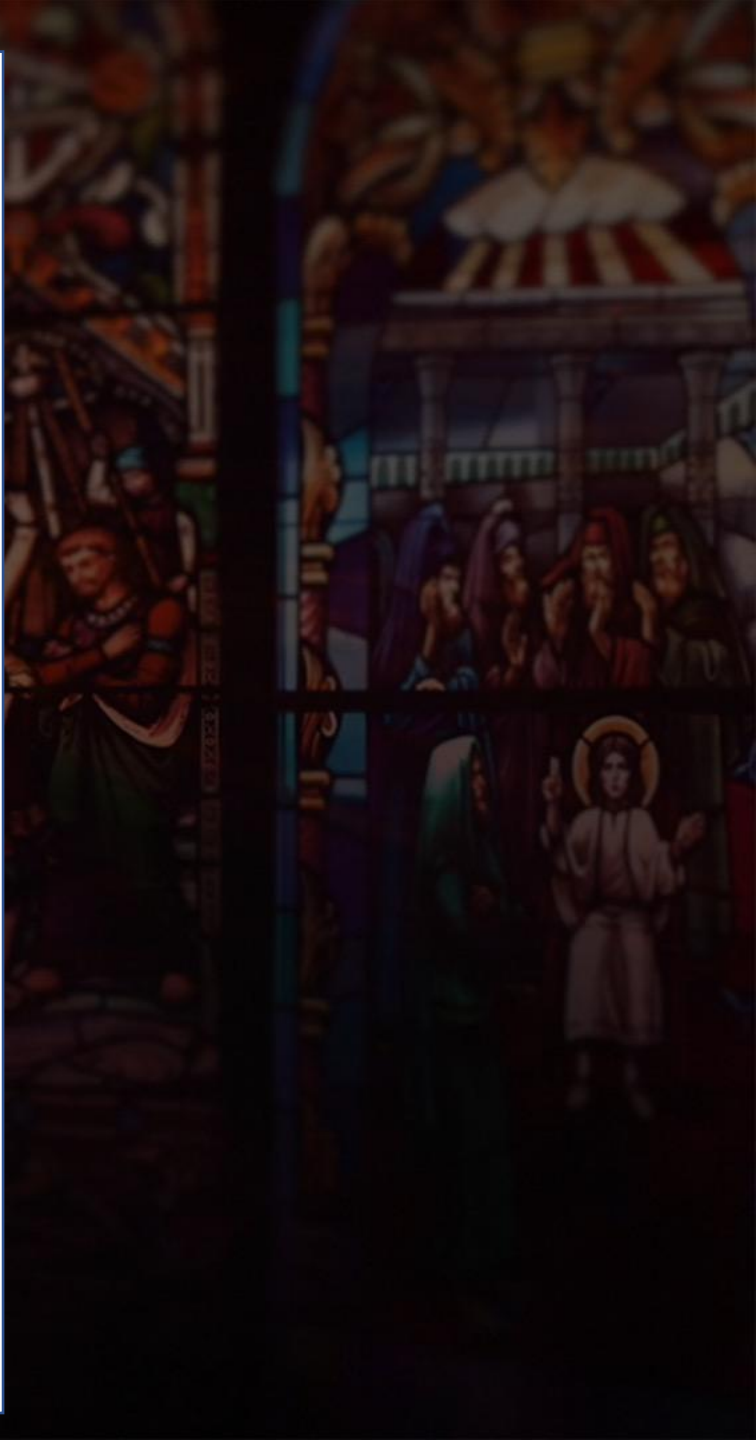
**How did we get here?**

The background of the slide is a dark, semi-transparent image of a stained glass window. The window features several arched panels with intricate designs. The central panel depicts a figure, likely Christ, in a red robe, possibly in a state of suffering or death. Other panels show various religious figures and scenes, including what appears to be a crucifixion and a group of people in a building. The overall color palette is dominated by deep reds, blues, and golds, typical of traditional stained glass art.

# How did we get here?

Christ is the originator of all things—in every place, of every sort, and of every rank—everything originated with Him. God mediated the beginning of life for the entire universe through His Son.

Dr. Constable



The background is a dark, semi-transparent overlay of a colorful stained glass window. The window features several panels with religious imagery, including a central panel with a figure in a red robe, possibly a saint or the Virgin Mary, and other panels with various figures and architectural elements. The overall tone is solemn and reverent.

For you created my inmost being;  
you knit me together in my mother's womb.

I praise you because I am fearfully and  
wonderfully made; your works are  
wonderful, I know that full well.

PS. 139: 13-14

The background features a row of five stained glass windows. From left to right: the first window shows the Last Supper; the second shows the Resurrection with an angel and a stone being rolled away; the third shows the Ascension with Jesus rising into the air; the fourth shows the Pentecost with the Holy Spirit as a dove; and the fifth shows the Pentecost with the Holy Spirit as a dove. The text "Why are we here?" is overlaid in white on the central windows.

**Why are we here?**

The background of the image is a dark, semi-transparent overlay of a stained glass window. The window features several arched panels, each containing a different religious scene. On the left, there is a scene of a man being crucified. In the center, a figure is shown in a red garment, possibly a martyr or a saint. On the right, there are scenes of a group of people in a building and a single figure standing. The overall color palette is dominated by dark blues, browns, and reds, with some lighter areas where the stained glass is visible.

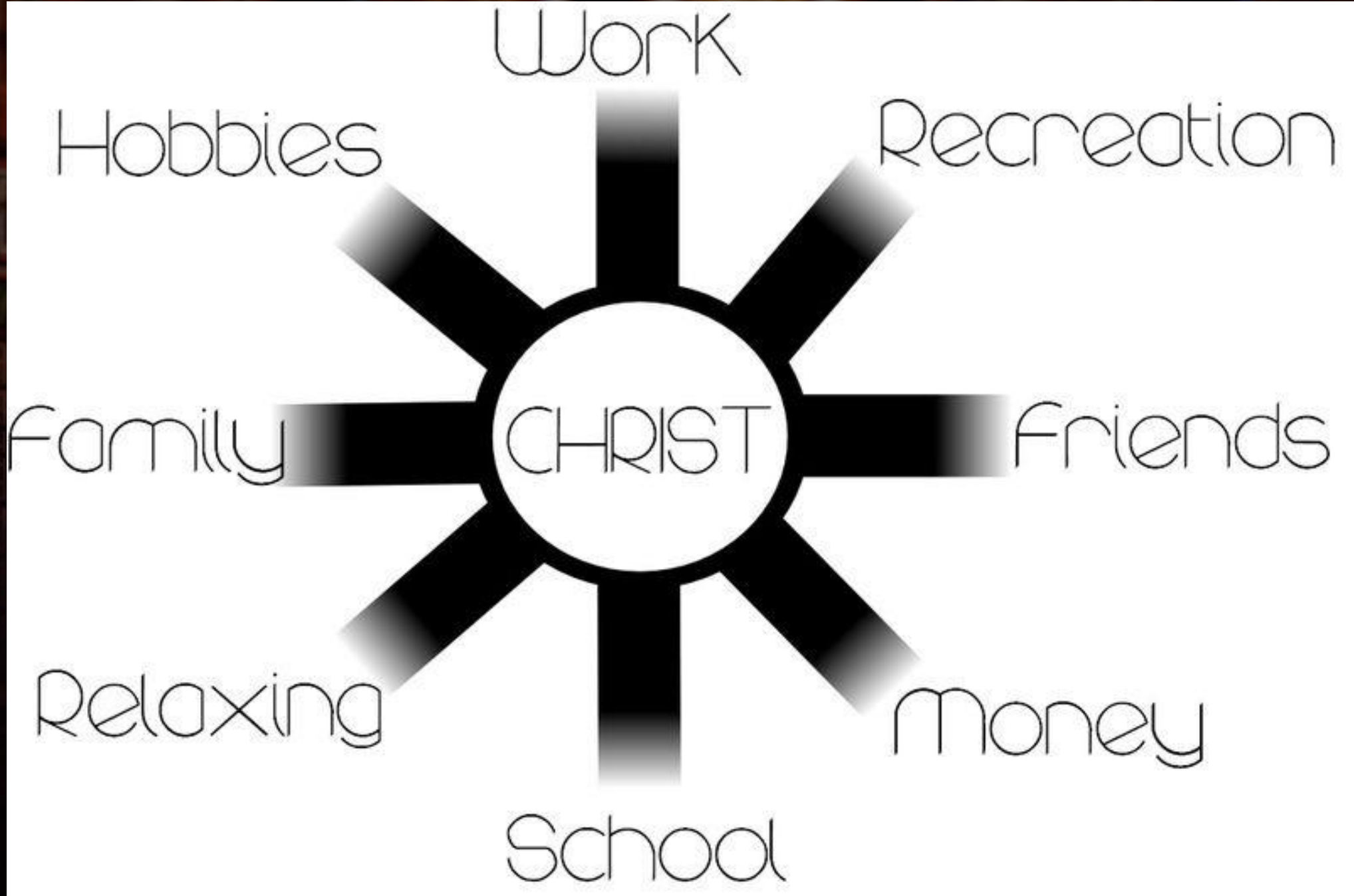
**Why are we here?**

***The chief end of man is to  
know God, glorify God and  
enjoy Him forever.***

# Why are we here?

“You have made us for Yourself, O Lord, and our hearts are restless until they rest in You.”

Augustine



The background of the image is a row of five stained glass windows. From left to right: the first window shows the Last Supper with Jesus and his disciples; the second window shows the Resurrection with an angel and the stone rolled away; the third window shows the Ascension with Jesus rising into the air; the fourth window shows the Pentecost with the Holy Spirit as a dove and tongues of fire; the fifth window shows the Descent into Hell with Jesus leading the souls of the dead. The text "Who determines right and wrong?" is overlaid in white on the center of the image.

**Who determines right and wrong?**

# Who determines right and wrong?

I run in the path of your commands,  
for they have set my heart free.

Ps. 119:32

A large, multi-paned stained glass window with a dark, semi-transparent overlay. The window features several panels depicting religious scenes. The central panel shows a figure in a red and gold robe, possibly a saint or a figure of divine light, standing in a brightly lit, arched setting. To the left and right are panels showing groups of people in various poses, some appearing to be in a state of prayer or contemplation. The overall color palette is dominated by deep blues, greens, and browns, with highlights of gold and red. The text "What happens after you die?" is centered over the window in a white, sans-serif font.

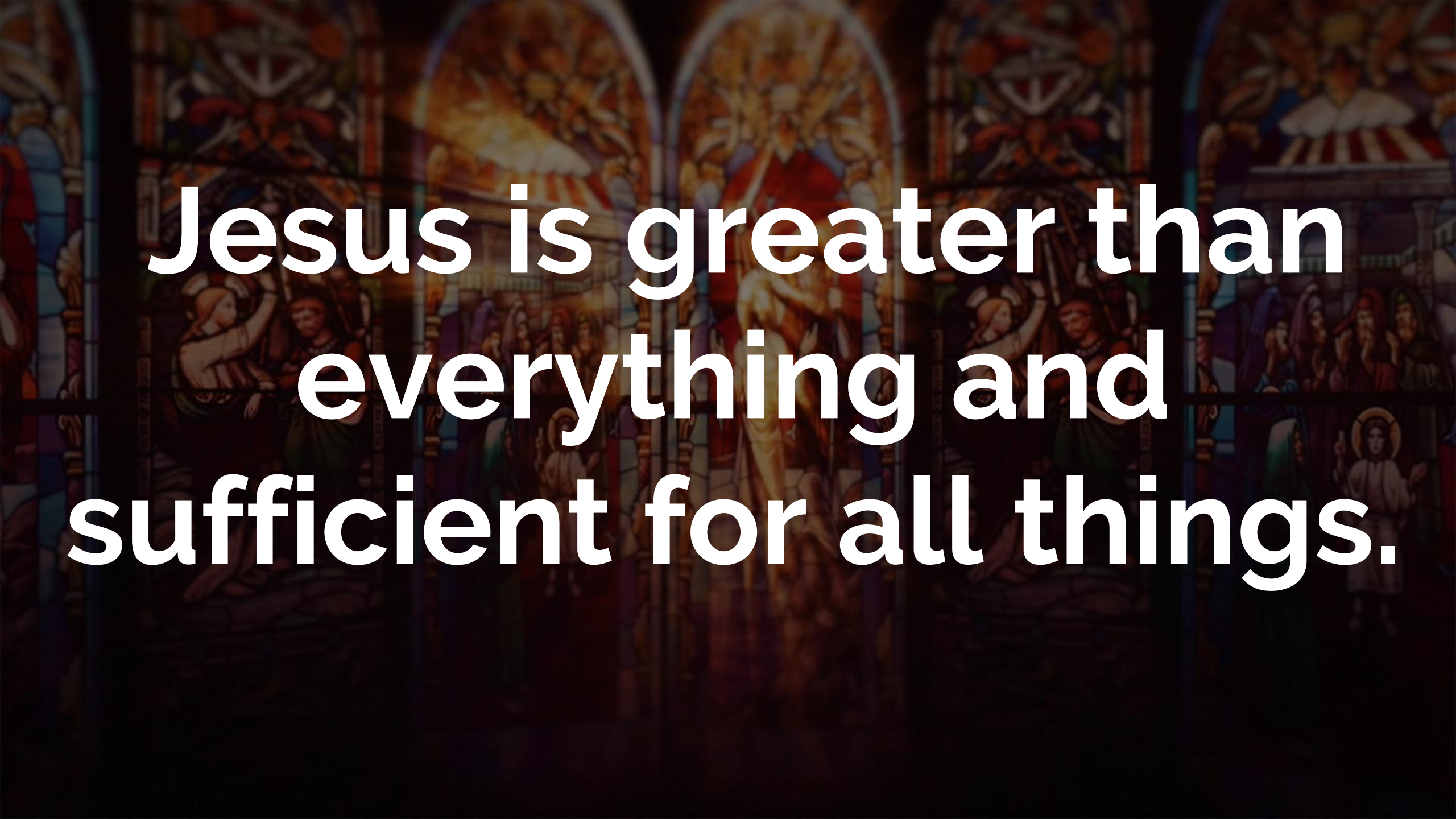
**What happens after you die?**



# What happens after you die?

And if I go and prepare a place for you, I will come back and take you to be with me that you also may be where I am.

John 14:3

A background of a large, colorful stained glass window with multiple arched panels. The central panel features a prominent figure, likely Jesus, surrounded by other figures in a dramatic scene. The colors are rich and varied, including reds, blues, yellows, and greens.

**Jesus is greater than  
everything and  
sufficient for all things.**